

ITEM NO.	QTY.	DESCRIPTION	PART NUMBER	LENGTH
1	1	WORMBOX HOUSING	W16-0101	
2	3	BUSH - WORMBOX	W16-0700	41.3
3	1	BUSH - CLUTCH HOUSING	W16-0702	54
4	1	DRUM SHAFT	W16-0520	595.3
5	1	WORMWHEEL HUB	W16-0440	57.2
6	2	KEY - IMPERIAL	5/8" SQ x 2 3/16"	
7	2	KEY - IMPERIAL	5/8" SQ x 2 7/8"	
8	1	KEY - IMPERIAL	5/16" SQ x 1.115"	
9	1	WORMWHEEL	W16-0420	
10	1	WORMBOX COVER	W16-0151	
11	1	WORMBOX COVER GASKET	W16-0802	Ø249.2
12	1	WORM - HYDRAULIC	W16-0400	
13	2	ANGULAR CONTACT BALL BEARING 7307-B 35*80*21		
14	1	DRUN - DN125 STANDARD	W16-0500	
15	1	DRUM SHAFT SPACER	W16-0590	6.4
16	1	DRUM BUSH - WORMBOX END	W16-0701	44.5
17	1	DOG CLUTCH	W16-0610	66.7
18	1	DOG CLUTCH HOUSING	W16-0251	
19	1	W20 W16 DOG CLUTCH YOKE	W20-0270	
20	1	DOG CLUTCH HANDLE	W16-0271	
21	3	GREASE NIPPLE 1/8" BSP		
22	2	SPRING PIN 5/16" x 1 1/2"		
23	1	3/8" BEARING BALL		
24	1	DOG CLUTCH DETENT SPRING	W8-0631	0.55
25	1	SOCKET SET SCREW 1/2"-20 UNF x 1/2"		
26	1	SOCKET SET SCREW 5/8"-11 UNC x 5/8"		
27	1	OIL SEAL	CR22354	2.25x3x0.375
28	2	DRAG BRAKE PAD	W8-0640	12
29	2	DRAG BRAKE SPRING	W8-0641	
30	2	WORM SHAFT CAP GASKET	W16-0800	Ø120.7
31	12	HEX HEAD SET SCREW 3/8"-24 UNF X 1 1/2"	HHSS 0.3125-18x0.75	
32	8	HEX HEAD SET SCREW 3/8"-16 UNC x 1"		
33	6	HEX HEAD SET SCREW 3/8"-16 UNC x 1 1/4"		
34	2	HEX HEAD SET SCREW 1/2"-13 UNC x 1 1/4"		
35	1	W16 W20 WORMSHAFT CAP - BLIND	W20-0200	28.6
36	1	W16 W20 HYDRAULIC MOTOR ADAPTOR	W20-0330	
37	1	HYDRAULIC COUPLING 1" x 1 1/4"	W16-0340	79.4
38	1	SAM HYDRAULIC MOTOR BG S 160		
39	1	BREATHER 3/8" BSPT		
40	2	3/8" BSPT PLUG - HEX SOCKET		3/8" BSPT
41	6	HEX HEAD SET SCREW 3/8"-16 UNC x 1 1/4"		

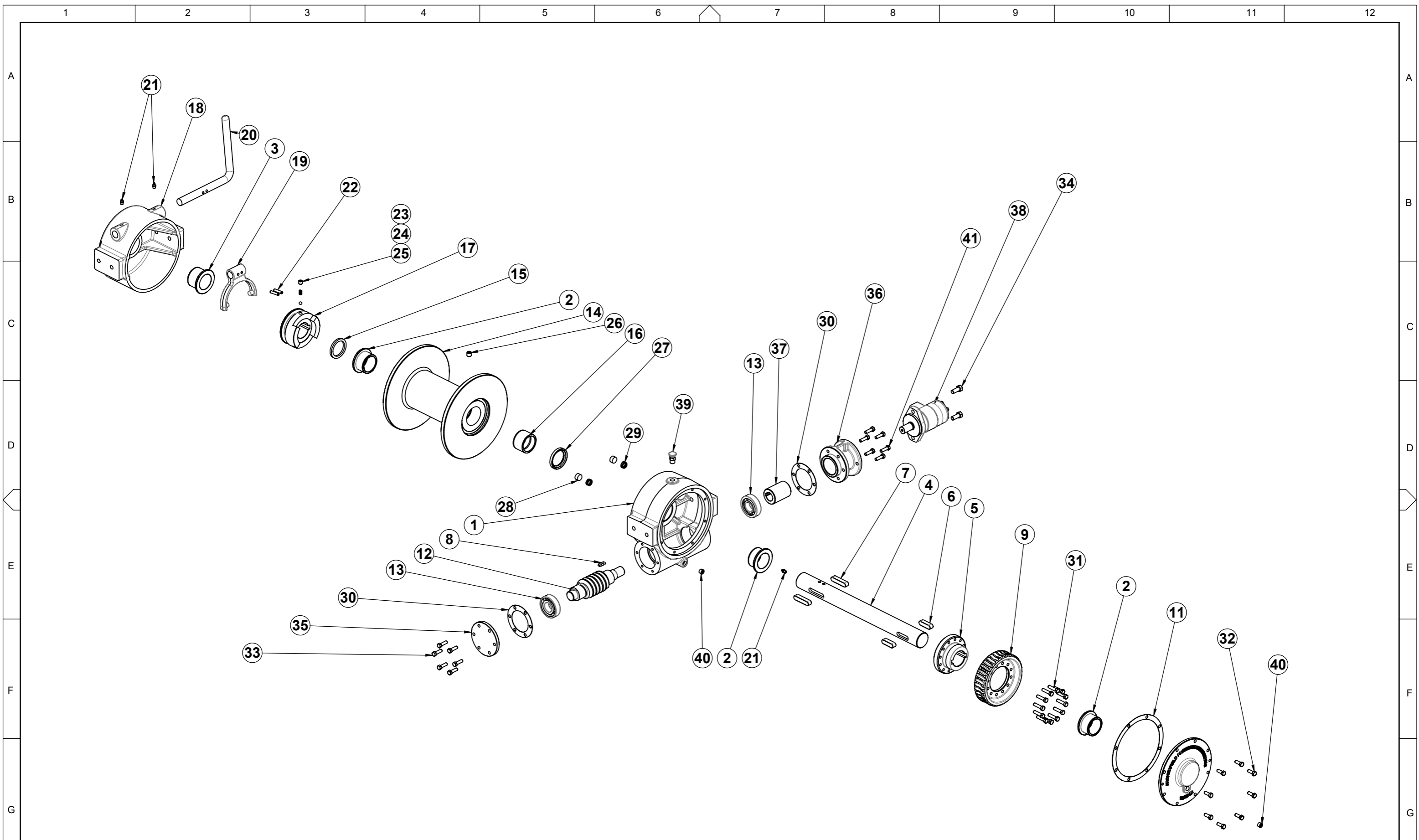
**GEARS AND WINCHES**

2 COIN ST MOOROOKA QLD 4105  
 PO BOX 206 ACACIA RIDGE QLD 4110  
 Ph (07) 3875 1568  
 Fx (07) 3277 4316  
 Email admin@winch.com.au

COPYRIGHT RESERVED. The design detailed on this drawing is the property of Gears and Winches P/L and must be returned on demand. It is issued on the strict condition that except with our written permission it must not be copied or communicated to any third party, nor is it to be used for any purpose other than for which it was issued.

DRAWN	IRH	STANDARD WINCHES		
CHECKED		W16 LOW MOUNT HYDRAULIC WINCH		
MATERIAL		SAM BG-S 160 MOTOR		
MATERIAL NOTES				
FINISH				
DATE PRINTED	WEIGHT	SCALE	SHEET No.	DWG No
3/09/2018	92.2 Kg	1:6	1 OF 2	W16-0003-0

DWG No	REFERENCES	REV	DATE	DESCRIPTION	DRAWN	CHECK	APPD
1	2	3	4	5	6	7	8
		0	03/09/18	FIRST ISSUE	IRH		



				<b>GEARS AND WINCHES</b>			DRAWN IRH		STANDARD WINCHES W16 LOW MOUNT HYDRAULIC WINCH SAM BG-S 160 MOTOR							
				2 COIN ST MOOROOKA QLD 4105 PO BOX 206 ACACIA RIDGE QLD 4110 Ph (07) 3875 1568 Fx (07) 3277 4316 Email admin@winch.com.au			CHECKED									
				COPYRIGHT RESERVED. The design detailed on this drawing is the property of Gears and Winches P/L and must be returned on demand. It is issued on the strict condition that except with our written permission it must not be copied or communicated to any third party, nor is it to be used for any purpose other than for which it was issued.			MATERIAL		<b>FOR MANUFACTURE</b>							
							MATERIAL NOTES									
							FINISH		- REV W16-0003-0							
							DATE PRINTED 3/09/2018						WEIGHT 92.2 Kg		SCALE 1:12	
DWG No	REFERENCES	REV	DATE	DESCRIPTION	DRAWN	CHECK	APPD									
1	2	3	03/09/18	FIRST ISSUE	IRH											