

# BLUE SERIES BOAT RAMP WINCHES

## AM1026B ECONOMY WINCH

This compact, versatile and rugged winch is designed specifically for hauling. It is ideally suited for applications such as boat ramps.

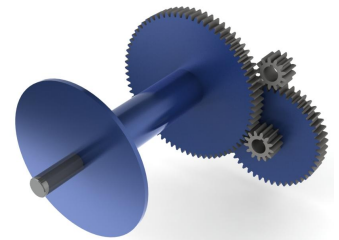
### SPECIFICATIONS

Ratio	87:1
Average Line Speed	4.6 m/min
Capacity	3,600 kg on a wheeled trailer up a 12 ½° ramp
Weight	60 kg

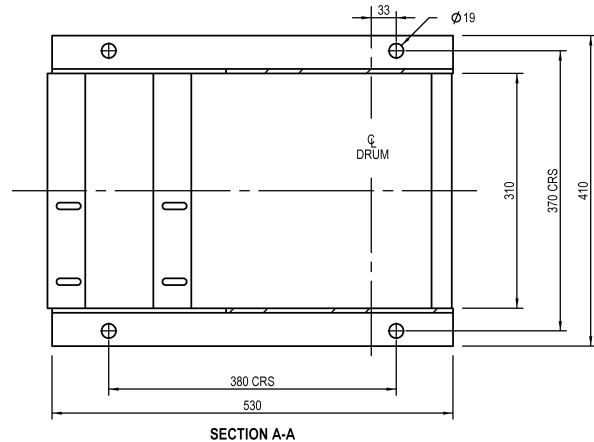
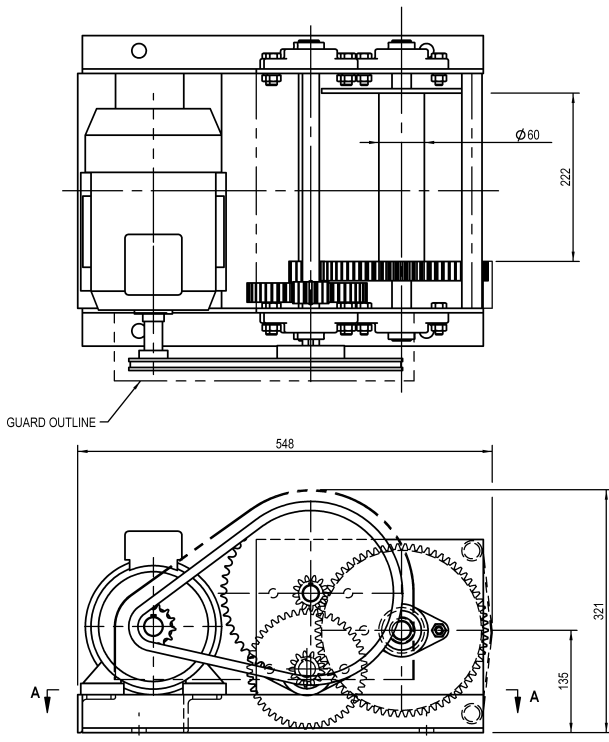
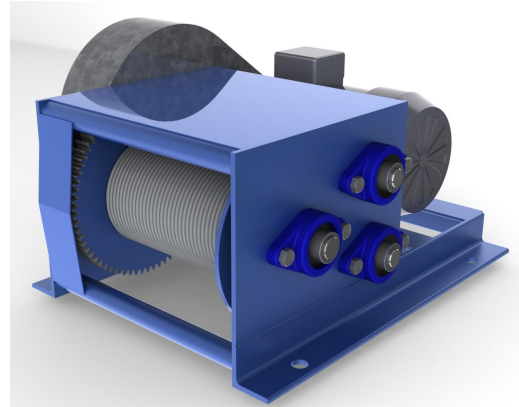
### STANDARD FEATURES

- Steel machine cut gear train
- 0.75 kW 240V Australian made CMG motor
- Plugs into a standard 10 amp power point
- Automatic fail safe brake
- Greaseable bearings
- Forward and reverse pendant control, 3m lead and 3 pin plug
- 30m x Ø6mm wire rope (Max capacity of the drum is 70m of Ø6mm rope)
- Optional 24V pendant control
- Optional remote control

**PROUDLY MADE IN AUSTRALIA**  
**FULL 2 YEAR WARRANTY**



This winch features a precision machined, high efficiency gear train for long service and reliability.



### QUICK GUIDE TO BLUE SERIES WINCHES

SLOPE		MODEL	MODEL
Ramp Gradient		AM1026B	AM2026B
1:12	5°	8,000 kg	15,000 kg
1:4.5 *	12.5°	3,600 kg	7,000 kg
1:3.75	15°	3,000 kg	5,750 kg
1:2	27°	1,800 kg	3,600 kg

\* Standard boat ramp angle  
Note: Figures based on a rolling load over a smooth surface

Your Winch Industries Distributor is:



Winch Industries Pty Ltd  
2 Coin Street  
Moorooka Qld 4105  
PO Box 206  
Acacia Ridge Qld 4110  
Ph: (07) 3875 1568  
Fx: (07) 3277 4316  
www.winch.com.au